

OVERTON CE PRIMARY ADVENT CALENDAR 2025



Happy Advent!

1

Winchester Science Centre
Year 6

2

Parent Council Meeting 7.15 - 8.15pm
Warren Room

3

Donation Drop Off for Christmas Jumper & Toys

4

What do you call a blind reindeer?
No-eye deer

5

What do you call a blind reindeer with no legs?
Still no-eye deer.

6



How did Scrooge win the football game?
The Ghost of Christmas passed.

7

KS1 Dress Rehearsal
Christmas Production

8



KS1 Christmas Production
9:00 - 10:00 am

9

Year 6 YV Beech Tree
Year 5 Anglo Saxon Day
Parents Viewing 2.30 - 3
KS1 Christmas Production 5:30 - 6:30pm

10



Christmas Jumper & Toy Swap Shop
Orchestra Playing in Assembly 1:30 - 1:45pm

11

Why are Christmas trees so bad at sewing?
They're always dropping their needles.

12

What do you get when you cross a snowman with a vampire?
Frostbite

13

What is Santa's favourite kind of pizza?
One that's deep-pan, crisp and even.

14



Year 3 Stone Age Day
Parents Viewing 8.45 - 9am

15

Rock Performance
KS1 9:30
KS2 10:30
Parents 2.00

16



School Pantomime
Y5 & 6
Carol Concert
St Mary's Church 6 - 8pm

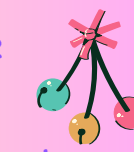
17

Class Christmas Parties
School Disco
KS1 3:30 - 4.30pm
KS2 - 5.30 - 7pm

18

Staff Pantomime
School Christmas Lunch
Nursery Christmas Performance 1pm

19



Why did no-one bid for Rudolph and Blitzen on eBay?
Because they were two deer

20

How did Mary and Joseph know that Jesus was 8lb 2oz when he was born?
They had a weigh in a manger.

21

What do you call an old snowman?
Water

22

What's a reindeer's favourite singer?
Beyonsleigh.

23

What do you call a snowman with a six pack?
An abdominal snowman

24



We wish everyone a very Merry Christmas from Overton CE Primary

25

